

SCIENCE PIONEERS

2010 - 2011
Annual Report





Dear Friends of Science Pioneers,

Science Pioneers just completed its 54th year of service to the youth and teachers of the Greater Kansas City area. Our flagship program the Greater Kansas City Science and Engineering Fair celebrated its 60th anniversary. The celebration, sponsored by the Kansas City Southern Charitable Fund, MRIGlobal and Burns & McDonnell, honored their former leaders Jan Armstrong, Jim Spigarelli and Newton Campbell as Pillars of Science. Kansas City Grand Award winners placed strongly at the International Science and Engineering Fair with Prarthana Dalal placing 3rd in Medicine and Health Sciences and Tyler Howard placing 2nd in Energy and Transportation. It should be noted that Prarthana Dalal also won the International BioGENEius competition with her work.

In June 2010, the Board launched a strategic planning process that began with discussions with civic leaders and facilitated discussions with our stakeholders (teachers, foundation and corporate funders). These discussions confirmed the positive impact Science Pioneers has in teacher development and in encouraging students to pursue STEM careers. As a result of these conversations, Science Pioneers is concentrating on these strategic priorities: enhancing our collaborative relationships, defining our core audiences and tailoring our communications to them, and telling our story in a consistent and compelling way that links what we do with STEM workforce development.

Science Pioneers also conducts a number of other programs to strengthen science teaching, to promote and reinforce science knowledge and to encourage youth into careers in science, technology, engineering and mathematics.

The shared vision of the Board and staff is to become a “go to” source for science, technology, engineering and mathematics (STEM) education for the students, teachers and school districts in the Greater Kansas City area. To that end, Science Pioneers continues with Strategic STEM Instruction and has begun on-line courses for teachers to hone their skills and science knowledge. This year, Science Pioneers provided its first professional development workshops for After School providers.

To continue reaching students, teachers, and parents effectively, Science Pioneers sought and received grants to fund rebuilding our website into a more efficient tool for inspiring students and enabling teachers. The website was launched in August and will continue its development to aid our communities as they drive changes in STEM education.

Student research education is what makes Science Pioneers unique among out-of-school science education organizations. The authors of a 2007 National Science Foundation funded study concluded that undergraduate research was the major factor in pursuing research as a career. They further recommended that involving students in research needs to begin in elementary school and continue through high school.

To undergird these essential efforts in generating student interest and quality science teaching, the organization is seeking an expanding revenue base from corporations, foundations, and individuals. While the economy is tough, what Science Pioneers does cannot be neglected. For the community—its life sciences, engineering and technology companies, our efforts must be constant and growing.

Gary Tracy
2010-11 Chairman, Board of Directors

ScienceWise Kickoff

ScienceWise Kickoff was held on September 21, 2010, at the Ewing Marion Kauffman Foundation. The Kickoff presenter Sage Arnote provided the participants with quality resources and creative pedagogical strategies for technology integration. The teachers went home with a flash drive which included all the materials and websites from the presentation. The kickoff drew 80 area teachers from 54 schools and 24 school districts.

ScienceWise Courses

During the 10-11 school year, Science Pioneers held eight online 12-hour courses, one 12-hour short course, plus seven 4-hour short courses to give teachers concrete tools to improve their science knowledge and learn new teaching methods. For every 12-hours and a completed lesson plan, teachers could receive one hour of graduate credit from Baker University or the University of Missouri-Kansas City. Representing 35 schools and 16 school districts, private, and home schools, a total of 322 teachers attended the courses.

Courses Offered:

- C=MDC2 Conservation Mathematics in Forest, Fish and Wildlife. *Sally Bell & Claudine Lamb, Grades 3-8.*
- 20+ Ways to Integrate Technology in the Science Classroom. *Jane Sak & Terri Snethen, Grades K-12.*
- Mastering Experimental Design. *Scott McQuerry, Grades 3-12.*
- The Chemistry of the Body. *Scott McQuerry, Grades 4-12.*
- Design & Produce Your Own Virtual Field Experiences. *P. Allen Macfarlane, Grades 6-12.*
- Exploring Chemical & Physical Changes with Gases. *Mary Coogan and Rosemary Camp, Grades 6-12.*
- Using the Brain to Hook Students. *Patty Dailey, Grades K-12.*
- It's Not Magic: It's Science! *Carol Dunn, Grades 6-8.*
- Geo to Go. *Cheryl Turlin, Grades K-8.*
- NASA Sounds Off. *Ollie Bogdon, Grades K-8.*
- Get a Lift from the Basics of Rocketry. *Ollie Bogdon, Grades K-8.*

"I teach high school advanced physics and advanced chemistry and didn't know how the [online] courses would benefit me. My eyes have been opened to a world of resources..."

– Marvin Pennell, St. Peters, MO



Teacher Resource Day - February 12, 2011

Master teachers demonstrated proven science and math lessons to area science and math teachers, as well as pre-service teachers. The participants conversed with the 15 master teachers and experienced all of the outstanding lessons. Held on February 12 at UMKC University Center in conjunction with the Teachers Investigating Science Resources Expo, this wonderful and informative event drew 113 teachers. Teachers who attended the event received a complimentary CD with all the demonstrated lessons and other valuable information to use in their classrooms.

The event also allowed teachers to learn about great science opportunities and programs from 23 science education organizations in the Greater Kansas City Area. The expo provided one-stop shopping for field trip ideas and classroom resources.

"I always learn something and come away with ideas and things."
– 2010 teacher participant

Science Fair Kickoff- October 9, 2010

Science Fair Kickoff was held on October 9, 2010 in the UMKC Training Room at Union Station. The kickoff, offered to teachers, gives information they need to organize a science fair, generates ideas for projects and gives activities to motivate students. The kickoff also provides the rules of the Greater Kansas City Science and Engineering Fair. The kickoff drew 10 teachers.

Strategic STEM Instruction:

Science Pioneers' Strategic STEM Instruction (SSI) provides current, research-based professional development to schools and districts. Workshop topics are custom designed to meet specific teacher training or student learning goals. SSI contracted with Shawnee Mission School District, MOSACC State Conference, and Southland Professional Development Institute for four workshops for 200 teachers.

Professional Development for Teachers:

- 725 Participants
- 12 Course Presenters
- 1 Kickoff Presenter
- 15 Master teachers
- 23 Science Education Organizations



*About a 2011 course,
"Amazing Job! Activities and
labs that I can incorporate directly
into my lessons to help teach my
GLE's more effectively."*

The Science Pioneers Mentoring Program connects students and teachers with science professionals who encourage learning and career exploration in the fields of science, technology, engineering and math.

On November 13, 2010, Science Pioneers hosted the 24th annual Meet the Science Mentor Day at UMKC University Center. Students from grades 4-12 attended workshops to learn the "how to's" of a science fair project and visited with mentors who helped refine or develop ideas for their projects. Thirty-six engineers, physicians, and scientists met one-on-one with the students to discuss research ideas, clarify methodologies, and provide enthusiasm and support for their research. One hundred forty-five students from 43 schools and 12 school districts received guidance for quality project development. Parents and teachers also participated in the day's activities.

Displays of ongoing research and product development are another facet of Meet the Science Mentor. Twelve area scientists, engineers, and university researchers manned 9 displays. Students, teachers, and parents were encouraged to interact with these professionals about topics related to their "projects." Eighteen students from the 2010 Science Fair displayed their award winning projects for other students to see how high quality display boards communicate the solid experimental design of outstanding projects.

In addition to Meet the Science Mentor Day, Science Pioneers also maintains a Mentor Directory. Teachers may request a directory which contains contact information for nearly 40 area scientists who assist students with their research.

- **Mentors- 36**
- **Students - 145**
including 18 student presenters
- **9 projects by 12 scientists, engineers and other professionals**
- **8 other volunteers**



Students learned a lot about science fair projects, e.g. "about dependent and independent variables... how to make a control group... how to choose a project... making an experiment advanced."

– Various student participants,
2010



On January 21, 2011, 407 young women filled Science City at Union Station to near capacity for Expanding Your Horizons (EYH). From 6:30 pm to 10:00 pm, EYH immersed young women from 6th through 8th grades in hands-on workshops with 30 women drawn from the fields of science, technology, engineering and math. This year participants came from 16 school districts, private schools and home schools. Serving as role models, these professional women facilitated the 22 different workshops, ranging from Become a Pharmacist to Good Vibrations - The Science of Sound. The young women also experienced a planetarium show in the Science City Planetarium. The keynote speaker was Sandra J. Campbell in the role of Bessie Coleman. The monologue performed by Ms. Campbell entitled "Follow Your Dreams" is about the life of the first African American to become a licensed pilot.

EYH presents science to young women in a way that is fun, educational and relevant to daily life, while fostering an awareness of career opportunities in science, technology, engineering and mathematics through the use of successful women as role models.

EYH and the EYH Expansion were sponsored by Midwest Research Institute and Nettie Irene Van Der Veer Wagy Fund, American Association of University Women - KC MO Branch.

EYH Participants:

- **407 young women**
- **30 women presenters**
- **22 workshops**
- **82 parents/ adults/ volunteers**

EYH Expansion Program

The EYH Expansion Program was held in Haag Hall at the University of Missouri-Kansas City in three-hour sessions on three Saturdays in February and March. This program gives the young women who attended EYH an extended opportunity to explore the science, technology, engineering, and math careers in small hands-on workshops. In its fifth year, ten young women participated in the sessions, where they engaged in hands-on activities closely related to their mentors' work in chemistry and water quality. The Expansion Program culminated with a lunch for the young women and their mothers, where Pam Cabell from Honeywell spoke to the young women about the many career opportunities in engineering.

- **2 presenters**
- **10 young women**



"Thanks for making the girls feel so special. Working with a mentor has been such a positive experience for my daughter."

– Parent of EYH Expansion participant

The Extreme Screen at Union Station once again proved to be an ideal location for this year's Saturday Science Seminars. Total attendance for the Saturday seminars was 2,115 students from 36 schools including private, parochial, home school and 12 school districts. Through these eight seminars, area scientists, engineers, and other professionals provided students with a personal and in-depth look at current topics in science.

The R.A. Long Foundation and Johnson County Community College were the underwriting sponsors of this popular lecture series.

The 2010-11 Seminars:

October 9, 2010 - *Astronomical Irregularities...*
Damon Bradshaw, Planetarium Specialist

October 23, 2010 - *Water: Will We Have Enough in the Face of Climate Change?...* P. Allen Macfarlane
Ph.D., Kansas Geological Survey, Retired

November 5, 2010 - *Zombie Skunks, Killer Cats, and Ninja Bats: Why Rabies is Still a Threat in the Midwest...* Samantha Wisely, Ph.D., Kansas State University

December 4, 2010 - *The Hyatt Skywalk Collapse: What it Means to Be an Engineer...* Robynn Andracsek, Burns & McDonnell

January 22, 2011 - *Recent Advances in Stem Cell Research...* Keith Gary, Ph.D., Kansas City Area Life Sciences Institute

February 5, 2011 - *Why Rescue Rattlesnakes?...*
Mindy Walker, Ph.D., Rockhurst University

February 26, 2011 - *A Quick Refresher Course on Modern Evolutionary Theory and Updates on Recent Humanoid Fossil Finds and Their Consequences...*
Dick Wilson, Ph.D., Ken-A-Vision Mfg. Co.

March 12, 2011 - *Plant Health: Your Life Depends on It!...* James Stack, Ph.D., Great Plains Diagnostic Network

Total Participants:

- 2,115 students
- 36 schools + home and private schools
- 12 school districts

A letter to a seminar presenter,
*"Your topics related very specifically
to our current unit and reinforced,
then elaborated beyond what
we've been discussing in class."*

– Paula J. Donham,
Science Facilitator,
Olathe East High School



Science Pioneers hosted the 60th Greater Kansas City Science and Engineering Fair at Union Station, March 23-26, 2011. Two hundred fifty-seven judges evaluated 927 projects during the fair, developed by 1,261 students in grades 4-12, from more than 113 schools and 17 school districts.

The Fair grouped projects by category: Behavioral & Social Sciences, Botany & Zoology, Chemistry, Computer Science & Mathematics, Earth & Space Science, Engineering, Environmental Science & Renewable Energy, Force & Motion, Molecular Biology, Matter & Energy, and Inventions. Scientists, physicians, engineers, teachers and other professionals evaluated each entrant's ability to apply the scientific or design process to a research question or invention idea. Students received a gold, silver or bronze ribbon based on the merit of their research, data collection methods and conclusion. The top projects in each category and age group received Academic Awards during the awards ceremony. In addition to the Academic Awards, over 40 professional and sponsoring organizations presented many Special Awards to participants with outstanding research projects. All in all, 187 students received awards. For a complete list of awards, visit www.sciencepioneers.org.

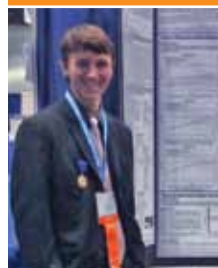
Many organizations provided sponsorships and donations in support of this outstanding event. Please see the contributors section of this report for a complete list of corporations and organizations.

Grand Award Recipients:

The top two senior projects that met the stringent requirements for entering the Intel International Science and Engineering Fair won the Science Pioneers Grand Awards. The Grand Award was an all-expense paid trip to the Intel International Science and Engineering Fair (ISEF) held in Los Angeles, California, May 8-13, 2011.

Grand Award Winners:

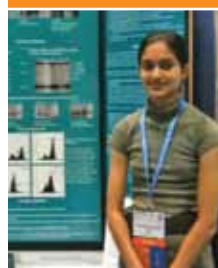
Sponsored by Kansas City Area Life Sciences Institute



Student: Tyler Howard,
Olathe Northwest

Title: Hydrolize: Kinetics of the Hydrogen-Production of the Magnesium- Water Reaction in Aqueous Solution

Intel ISEF: 2nd Place Grand Award in Energy and Transportation



Student: Prarthana Dalal,
Shawnee Mission East High School

Title: Modeling of human non-deletional hereditary persistence of fetal hemoglobin (HPFH) conditions in B-globin Locus transgenic mouse models:

the -175 (T to C) and -195 (C to G) A- gamma gene point mutations

Intel ISEF: 3rd Place Grand Award in Medicine and Health Sciences

Awards given to outstanding science teachers:

Howard Gadberry Excellence in Teaching Award

Barb McMahill, Fire Prairie Middle School, Fort Osage School District

Deanna Soukup, Bernard Campbell Middle School, Lee's Summit School District

The Howard Gadberry Memorial Award recognizes Mr. Gadberry's outstanding commitment to research professionalism, and his contributions to the community through his long-term involvement with Midwest Research Institute as their Senior Advisor for Technology. This year the awards of \$500 each were presented to Barb McMahill and Deanna Soukup.

Both of these teachers are involved in many areas of science in support of their students and schools. Each of them has had students compete in the

Greater Kansas City Science and Engineering Fair numerous times.

Barb McMahon has taught fifth-grade at Fire Prairie Middle School in the Fort Osage School District for 13 years. Mrs. McMahon never tires of the excitement she sees on students' faces when they discover something new in the area of science. Deanna Soukup has taught 8th grade at Bernard Campbell Middle School in the Lee's Summit School District for most of her career. Mrs. Soukup engages all of her students in a year-long program of in-depth research for their science projects.

Ken-A-Vision Sister Martina Rockers Excellence in Teaching Award

Mary Coogan, Liberty North High School

The Sister Martina Rockers Award is given annually by Ken-A-Vision to an area high school teacher who demonstrates the qualities of excellence in science teaching and student centered-ness that have been exemplified by Sister Martina in her still continuing fifty-five plus years of teaching at Bishop Miege High School. Ken-A-Vision, as an international manufacturer of microscopes and classroom cameras, is very proud to sponsor this annual award.

Mary Coogan has been teaching Biology and Chemistry for 25 years, first at Lincoln College Prep Academy, Kansas City, MO, and then Dalton High School, in Dalton, MO, followed by Grandview High School, Grandview, MO, and finally returning to her

Alma Mater at Liberty High School. After teaching many years at Liberty High School, recently she has been instrumental in establishing the Science Department at the new Liberty North High School. Among her many leadership roles at Liberty have been Secondary Science Curriculum Coordinator and co-chair of the Liberty Science Department.

At Liberty, Mary established one of the most skilled competition programs in the Kansas City Metro Area. Her teams have won at events such as the Chemathon at Missouri Western State University and the Regional Science Knowledge Bowl at Rockhurst University. Her teams went to the National Science Bowl in Washington, DC, three consecutive years. In the tradition of Sister Martina, Mary has shared her knowledge and skills as a science teacher with many presentations at the National Science Teachers Association meetings, Science Teachers of Missouri, and Science Pioneers "ScienceWise" programs.

As recipient of the Martina Rockers Outstanding Teacher Award, Mary Coogan received a plaque and a check for \$1,000.

On written evaluations of the Fair, 47% of the students said they were considering a career in science technology, engineering or mathematics.

"Science Pioneers' programs all present unique and priceless opportunities for students that help us take our understanding and interest in science to a new level. My interest in science has grown exponentially because of my involvement."

*– Prathana Dalal,
Shawnee Mission East High School*



SEPTEMBER 2011

- 15 ScienceWise Kickoff

OCTOBER 2011

- 1 ScienceWise Short Course - *Matter, Motion, & More: Engaging Students in Science*. Presenters: Rosemary Camp & Mary Coogan
- 8 Science Fair Kickoff. Presenters: Patty Dailey & Betty Paulsell
- 8 Saturday Science Seminar - *Forensic Science and DNA Analysis: Bringing the Scientific Method to the Courtroom*. Presenter: Kelly McGill Carroll, MSFS
- 18 ScienceWise Short Course - *KSAM(Kindergarten through Sixth Grade Life Science & Math)*. Presenter: Cheryl Turlin
- 22 Saturday Science Seminar - *What Are Model Organisms and Why Are They Part of the Human Genome Project?* Presenter: Matthew Buechner, Ph.D. Associate Professor, University of Kansas

NOVEMBER 2011

- 1 ScienceWise Online Course begins - *The Chemistry of the Body*. Presenter: Scott McQuery
- 1 ScienceWise Online Course begins - *Spinning Through the Solar System Part 2*. Presenter: Scott McQuery
- 5 Meet the Science Mentor Day
- 10 ScienceWise Short Course - *Gearing Up to a Moving Experience*. Presenter: Ollie Bogdon, Ph.D.
- 12 Saturday Science Seminar - *Technology in Today's Medical World*. Presenter: Michael Ash, MD, RPh, Cerner Corporation
- 19 ScienceWise Short Course - *Habitats, the Inside Story*. Presenter: Claudine Lamb
- 29 ScienceWise Short Course - *Ice, Ice, Baby*. Presenters: Cheri Hamilton & Brandon Gillette

DECEMBER 2011

- 3 Saturday Science Seminar - *Cell Wars: Fighting Cancer with Smart Weapons*. Presenter: Lynn Marzinski, RN, University of Kansas Cancer Center
- 6 ScienceWise Short Course - *A Look at Climate Change Using Online Data*. Presenters: Brandon Gillette & Cheri Hamilton

JANUARY 2012

- 1 ScienceWise Online Course begins - *Simplified Simple Machines*. Presenter: Scott McQuery
- 1 ScienceWise Online Course begins - *Wet 'n Wild Weather Part 2*. Presenter: Scott McQuery
- 14 ScienceWise Short Course - *Year of the Solar System*. Presenter: Carol Dunn
- 20 Expanding Your Horizons
- 21 Saturday Science Seminar - *No Longer a Black and White Moon!* Presenter: Cassandra Runyon, Ph.D., College of Charleston
- 26 ScienceWise Short Course - *Inquiry Inside Out*. Presenter: Ollie Bogdon, Ph.D.
- 28 Teacher Resource Day

FEBRUARY 2012

- 4 Saturday Science Seminar - *Traumatic Brain Injury: Are You at Risk?* Presenter: R. Scooter Plowman, MS, University of Kansas Medical Center
- 11 ScienceWise Short Course - *Activities in Life Science to Engage Today's Learners*. Presenter: Karen Rogers
- 15 ScienceWise Short Course - *NASA Sounds Off*. Presenter: Ollie Bogdon, Ph.D.
- 17 61st Greater Kansas City Science & Engineering Fair Applications due!
- 18 EYH Expansion Program - Session 1
- 25 Saturday Science Seminar - *Spring Brings Severe Weather—Why?* Presenters: Jim Keeney, Deputy Chief of Weather Services/ Warning Coordination Meteorologist

MARCH 2012

- 3 EYH Expansion Program - Session 2
- 10 Saturday Science Seminar - *Terrorism or Flu: Planning for the Next Big Disaster in KC* Presenter: Alisha Griswold, Medical Reserve Corps of Greater Kansas City
- 10 ScienceWise Short Course - *Get Involved with GLOBE*. Presenter: Pat Lucido & Betty Paulsell
- 21-23 61st Annual Greater Kansas City Science and Engineering Fair, Union Station
- 24 Charles N. Kimball Awards Ceremony, Greater Kansas City Science and Engineering Fair

MAY 2012

- 13-18 International Science and Engineering Fair, Pittsburg, PA

Chair

Gary Tracy

Hallmark Cards, Inc. (Retired)

Vice-Chair

Elizabeth Usovicz

Principal
WhiteSpace Consulting

Secretary

Lisa Browar

President
Linda Hall Library

Treasurer

Mark English, J.D.

Assistant General Counsel
Kansas City Power & Light

Jan Armstrong

Kansas City Southern Industries (Retired)

Ollie Bogdon, Ph.D.

Missouri NASA Educator Program

Newton A. Campbell

Burns & McDonnell (Retired)

Brian Carter

Cerner Corporation

Bibie M. Chronwall, Ph.D.

University of Missouri- Kansas City (Retired)

Robb McKim

Vice President
PGAV Architects and Planners

Todd Pitman

TMPitman & Associates, LLC

Tom Sack, Ph.D.

Senior Vice President and Director
of Technical Operations
MRIGlobal

Rick Thaemert

Global Prairie

Carol Williamson (SPAC Liaison)

University of Kansas

Director Emeritus

Ben D. McCallister, M.D.

Endowed Chair & Director of Cardiovascular Research
Mid America Heart Institute (Retired)

Ray B. Luhnnow, Jr.

Burns & McDonnell (Retired)

Jan Kreamer

Greater Kansas City Community Foundation (Retired)

O.L. Plucker, Ph.D.

Kansas City KS School District (Retired)

Science Pioneers Staff

Mary Brock, *Executive Director*

Betty Paulsell, *Program Director*

Patty Dailey, *Assistant Program Director*

Pam Stepp, *School Services Coordinator*

Shea O'Riley, *Administrative Assistant*



Organizations:

Awards of Excellence (\$10,000 and above)

Bank of America - John W. and Effie E. Speas Memorial Trust
Campbell Family Foundation (SFS)
CPS Foundation Inc.
Garmin International, Inc. (SFS)
Hall Family Foundation
Lebensfeld Foundation
Marion Merrell Dow Fund (SWS)
MRIGlobal (EYH, SFS)
Time Warner Cable (SFS)
William T. Kemper Foundation (SWS, SSIS)

Awards of Distinction (\$5,000- \$9,999)

Anonymous
Ash Grove Charitable Foundation (SFS)
BlueCross BlueShield of Kansas City
Burns & McDonnell Foundation (SFS)
Johnson County Community College (SSS, SFS)
Kansas City Area Life Sciences Institute, Inc. (SFS)
K-State University (MTSMS, SFS)
R.A. Long Foundation (SSSS)
University of Kansas Center of Research, Inc. (MTSMS, SFS)
University of Kansas Medical Center Research Institute, Inc. (MTSMS, SFS)
University of Missouri - Kansas City (MTSMS, SFS)
V & H Charitable Foundation

Sponsorship Key:

EYHS) - EYH Sponsor
(MTSMS) - Meet the Science Mentor Sponsor
(SFS) - Science Fair Sponsor
(SFD) - Science Fair Donor
(SSIS) - Strategic STEM Instruction Sponsor
(SSSS) - Saturday Science Seminar Sponsor
(SWS) - ScienceWise Sponsor
(TRDS) - Teacher Resource Day Sponsor

Awards of Significance (\$1,000- \$4,999)

American Association of University Women, KCMO, Nettie Irene Van Der Ver Wagdy Fund (EYHS)
Keith E. Barnes Youth Science and Education Fund
Bayer Animal Health (SFS)
Blue Valley USD #229
Cerner Corporation (SFS)
Children's Mercy Hospital (SFS)
Cloud L. Cray Fund
Commerce Bank, NA (SFS)
Cust Green Mountain Foundation
Dunn Family Foundation (SFS)
Hallmark Cards, Inc. (SFS)
Honeywell Employees (SFS)
Kansas Bioscience Organization, Inc. (KansasBio) (SFS)
The Kansas City Star (SFS)
Kansas City Southern Charitable Fund (60th Sponsor)
Kansas City University of Medicine and Biosciences (SFS)
Ken-A-Vision Manufacturing Co., Inc. (SFS)
LABCONCO Corporation (SFS)
Lee's Summit R-VII School District
Metropolitan Community College (SFS)
Mid-American Regional Council (TRDS)
Olathe School District USD #233
Oppenstein Brothers Foundation (SWS, SSIS)
Quintiles, Inc. (SFS)
Shawnee Mission USD #512
Shook, Hardy & Bacon, LLP (SFS)
Stinson Morrison Hecker LLP (SFS)
Terracon (SFS)
Women's City Club Charitable Foundation Fund (EYHS)

Awards of Merit (\$500- \$999)

Bartlett Grain Company Charitable Foundation
The Louis & Dorothy Cumonow Foundation
Doranne and Randall Hudson Foundation Fund
Hickman Mills C-1 School District
HNTB Corporation
Kauffman Foundation Matching Gifts Program
Nichols Company Charitable Trust

Patrons (\$250- \$499)

Archdiocese of Kansas City Kansas
Paul Denzer and Sue Bernstein Fund
Fort Osage R-1 School District
Pfizer Foundation Matching Gifts Program

Contributors (\$100-\$249)

Air and Waste Management Association Midwest Section (SFD)
The American Institute of Chemical Engineers - Kansas City Section (SFD)
American Meteorological Society - KC Chapter (SFD)
ASM International Kansas City Chapter (SFD)
Archie Dykes Library (SFD)
Bonner Springs USD #204
Center School District #58
Greater Kansas City Association of Family and Consumer Sciences (SFD)
Henry E. Wurst Family Foundation
Institute of Electrical and Electronics Engineers, Inc. (SFD)
Kansas City Chapter of Society of Technical Communication (SFD)

Kansas City Section of American
Chemical Society (SFD)
Medical Society of Johnson &
Wyandotte Counties (SFD)
Modern Fire Safety, LLC (SFD)
Sigma Theta Tau - Graceland
University (SFD)
Spring Hill USD #230
University of Missouri - KC
Advanced Certification Program
GIS (SFD)
Western Chapter of MO Society
of Professional Engineers (SFD)

Friends (to \$99)

Daniel Consulting LLC
West Platte R-II School District

Individuals:

Isaac Newton Circle (\$5,000 and above)

Newton and Mabel Campbell

Leonardo DaVinci Circle (\$1,000 to \$2,499)

Jan E. Armstrong
Lisa Browar
Mark and Renee English
Dr. Jim and Veronica Mertz
Dr. and Mrs. Allen Poe
James and Lisa Spigarelli
Karen Stelling
Rick and Jamie Thaemert

Thomas A. Edison Circle (\$500 to \$749)

Dr. James Godwin and
Dr. Beth Campbell
Diane and Bill Harper
Mr. and Mrs. James Hebenstreit
Todd Pitman
Tom and Patty Sack
Gary and Carmen Tracy

George Washington Carver Circle (\$250 to \$499)

Oneida Beeman-Lorimer
Mary C. Brock
Kay and John Callison
Brian Carter
Drs. Bibie Chronwall and
Stephen Morris
Kent A. Huston, M.D.
Robb and Jane McKim
Sherrill A. Mulhern
Judy Pfannenstiel and
David Waxse
Randell Sedlacek
Beth Anne Wigner
Chris and Marsha Wilson
Richard and Faith Wilson

Galileo Galilei Circle \$100 to \$249)

Susan and Bill Bell
Doug and Lisa Bittel
Kai Chang
Janet Cyr
Richard Dawson
Carol Dziadik Tuner
Elizabeth Evans, Ph.D.
Al and Linda Frisby
Mrs. Lathrop Gates
Richard J. Gentile, Ph.D.
Cheryl Hampton
Joni Hartong, M.D.
Betty Herndon
Joan S. Hunt
C. Lee Jones
Forrest G. Lowe
Charlotte and Harry McDonald
Rosemary Moran
John S. Neuberger
Hal and Wilda Sandy
Stephanie M. Smith

John and Rita Tyler
Elizabeth Usovicz
Kelley and Jeana Wilcox

Louis Pasteur Circle (\$75 to \$99)

Dr. and Mrs. James Glenski
Candi Marshall
Georgia Smith

Charles Darwin Circle (\$50 to \$74)

Teresa and John Badgerow
Ollie Bogdon
John Cessna
Mary Coogan
Laura Dickinson
Heather Fehling, Ph.D.
William E. and Marjorie A. Franklin
Thelma L. Gadberry
Anthony Kirkland
John McKelvey
Darrell and Betty Meador
Stephen and Marianne Oliva
Betty J. Paulsell
Charles Wurrey and Jill DeWitt

Jane Goodall Circle (\$25 to \$49)

Patty Dailey
Bill and Linda Eddy
Gary Hamilton
John W. MacCormack
Shea D. O'Riley
Pamela Stepp

Other Friends (to \$25)

Stephen and Marianne Oliva

Participating School Districts

Kansas

Archdiocese of Kansas City, Kansas
Blue Valley USD #229
Bonner Springs USD #204
De Soto USD #232
Gardner/ Edgerton USD #231
Home Schools
Kansas City Kansas USD #500
Lawrence USD #497
Leavenworth USD #453
Louisburg USD #416
Olathe USD #233
Piper USD #203
Private Schools
Shawnee Mission USD #512
Spring Hill USD #230
Turner USD #202

Missouri

Belton School District # 124
Blue Springs R-IV School District
Center School District #58
Diocese of Kansas City - St. Joseph
Excelsior Springs USD #40
Fort Osage R-I School District
Grandview C-4 School District
Grain Valley R-5 School District
Harrisonville R-IX School District
Hickman Mills C-I School District
Home Schools
Independence USD #30
Kansas City Missouri School District #33
Kearney R-I School District
Lee's Summit R-VII School District
Liberty USD #53
North Kansas City USD #74
Oak Grove R-VI School District
Park Hill School District
Platte County R-II School District
Pleasant Hill R-III School District
Private Schools
Raymore/ Peculiar R-II School District
Raytown C-II School District
West Platte Co. R-II School District

Volunteer Participation

Science Pioneers extends deep gratitude to our 2010-11 volunteers who made our programs possible throughout the year.

Greater Kansas City Science & Engineering Fair

Academic Judges - 257
Special Awards Judges - 59
Other Volunteers - 14

Mentoring Program

Meet the Science Mentor Day Mentors - 36
Science Displays/Presenters - 12
Student Presenters - 18
Mentors in the Mentor Directory - 30
Other Volunteers - 8

Saturday Science Seminar Presenters - 8

Expanding Your Horizons

Female Presenters - 30
Parent/ Other Volunteers - 82

Teacher Resource Day

Master Teachers - 15
Science Education Organization Presenters - 48

ScienceWise Kickoff - 1

Other Volunteers - 100

Total Volunteers - 718

Total Volunteers hours contributed to Science Pioneers Programs - 2,697

STATEMENT OF FINANCIAL POSITION

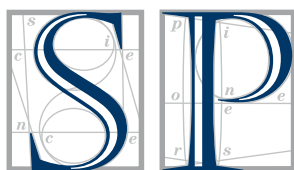
June 30, 2011 (With comparative totals for June 30, 2010)

	Assets		Liabilities and Net Assets		
	2011	2010		2011	2010
Cash and Cash Equivalents	\$ 187,536	\$ 182,208	Liabilities:		
Prepaid Expenses	3,074	4,271	Accounts Payable	\$ 81	\$ 3,253
Investments	354,368	297,826	Deferred Revenue	6,400	5,824
Pledges Receivable	30,770	6,800	Total Liabilities	6,481	9,077
Furniture and Equipment, net	16,448	10,469	Net Assets:		
Total Assets	592,196	501,574	Unrestricted	508,194	457,718
			Temporary Restricted	77,521	34,779
			Total Net Assets:	585,715	492,497
			Total Liabilities and Net Assets	\$ 592,196	501,574

STATEMENT OF ACTIVITIES

Year Ended June 30, 2011 (With comparative totals for the year ended June 30, 2010)

	2011			2010 Total
	Unrestricted	Temporarily Restricted	Total	
Support and Revenue:				
Contributions and net revenue from special events:				
Contributions	\$ 45,257	\$ 2,575	\$ 47,832	\$ 51,209
Grants	65,000	102,305	167,305	94,704
Sponsorships	-	133,500	133,500	119,500
Total Contributions and Net Revenue from Special Events	110,257	238,380	348,637	265,413
Registration Fees	14,672	-	14,672	13,735
School Assessments	11,512	-	11,512	16,300
Merchandise Sales	3,116	-	3,116	8,302
Investment Return	57,101	-	57,101	32,226
Fees and Earned Income	2,625	-	2,625	4,101
Other Income	-	-	-	1,813
Net Assets Released from Restrictions	195,638	(195,638)	-	-
Total Support and Revenue	394,921	42,742	437,663	341,890
Expenses:				
Program Services:	214,967	-	214,967	213,748
Supporting Services:				
Management and General	101,079	-	101,079	95,722
Fundraising	28,399	-	28,399	20,841
	129,478	-	129,478	116,563
Total Expenses	344,445	-	344,445	330,311
Increase (Decrease) in Net Assets	50,476	42,742	93,218	11,579
Net Assets of Beginning of Year	457,718	34,779	492,497	480,918
Net Assets at End of Year	\$ 508,194	\$ 77,521	\$ 585,715	\$ 492,497



SCIENCE PIONEERS

Science Pioneers
Union Station
30 West Pershing, Suite 410
Kansas City, Missouri 64108
Phone: (816) 460-2261
Fax: (816) 460-2264
www.sciencepioneers.org
admin@sciencepioneers.org

Science Pioneers Mission Statement:

The mission of Science Pioneers is to create innovative and supportive education activities that will encourage the youth of Kansas City to understand and use science and critical thinking in their careers and everyday life.



Become a Fan on Facebook.

We extend a special thank you to KCPL for generously donating the printing of this publication.